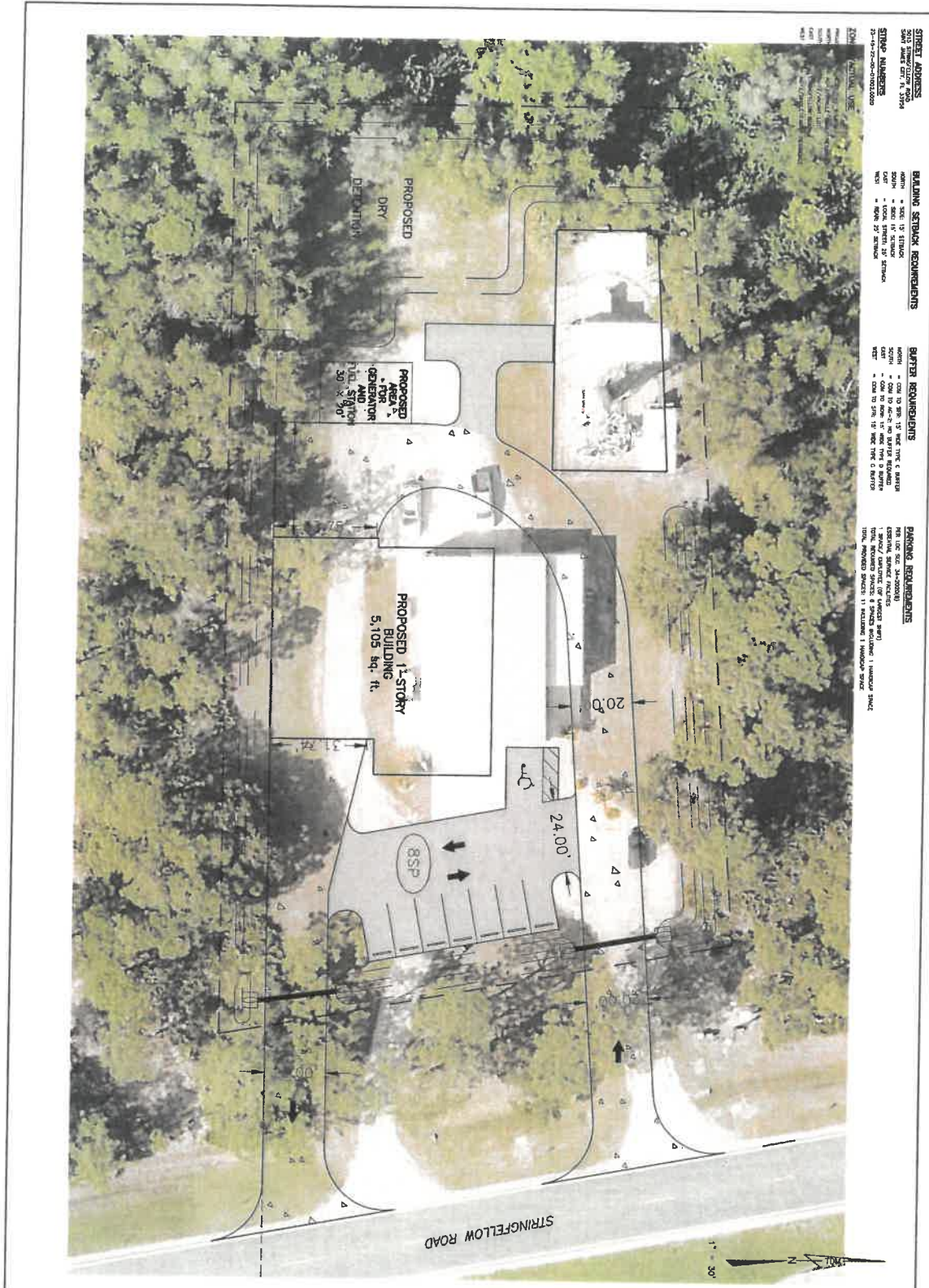


Matlacha/Pine Island Fire Control District
Workshop Agenda
June 14, 2021 at 5:30 p.m.
Pine Island Fire Station 1, 5700 Pine Island Road, Bokeelia

This meeting has been canceled.



STREET ADDRESS
 10000 SW 15th St, Ft. Myers, FL 33909

STREET NUMBERS
 23-44-24-25-26-27-28-29-30-31-32-33-34-35-36-37-38-39-40-41-42-43-44-45-46-47-48-49-50-51-52-53-54-55-56-57-58-59-60-61-62-63-64-65-66-67-68-69-70-71-72-73-74-75-76-77-78-79-80-81-82-83-84-85-86-87-88-89-90-91-92-93-94-95-96-97-98-99-100

BUILDING SETBACK REQUIREMENTS
 FRONT = 10' TO 15' SETBACK
 SIDE = 5' TO 10' SETBACK
 REAR = 10' TO 15' SETBACK

SETBACK REQUIREMENTS
 FRONT = 10' TO 15' SETBACK
 SIDE = 5' TO 10' SETBACK
 REAR = 10' TO 15' SETBACK

PLANNING REQUIREMENTS
 MIN. LOT SIZE: 24,000 SQ. FT.
 MIN. LOT AREA: 1.0 ACRE
 MIN. LOT WIDTH: 100' TO 120'

SHEET #
5 of 15

SCALE: AS SHOWN

Deven Martin, P.E.
Florida 020022

TDM
CONSULTING, INC.

43 Barkley Circle, Suite 200
Fort Myers, FL 33907
Phone: (239) 433-4231
Fax: (239) 433-4232
www.tdmconsulting.com

Civil Engineering and Planning

deven@tdmconsulting.com
www.tdmconsulting.com

PINE ISLAND FIRE STATION

SITE DIMENSION PLAN #3

DATE	REVISION

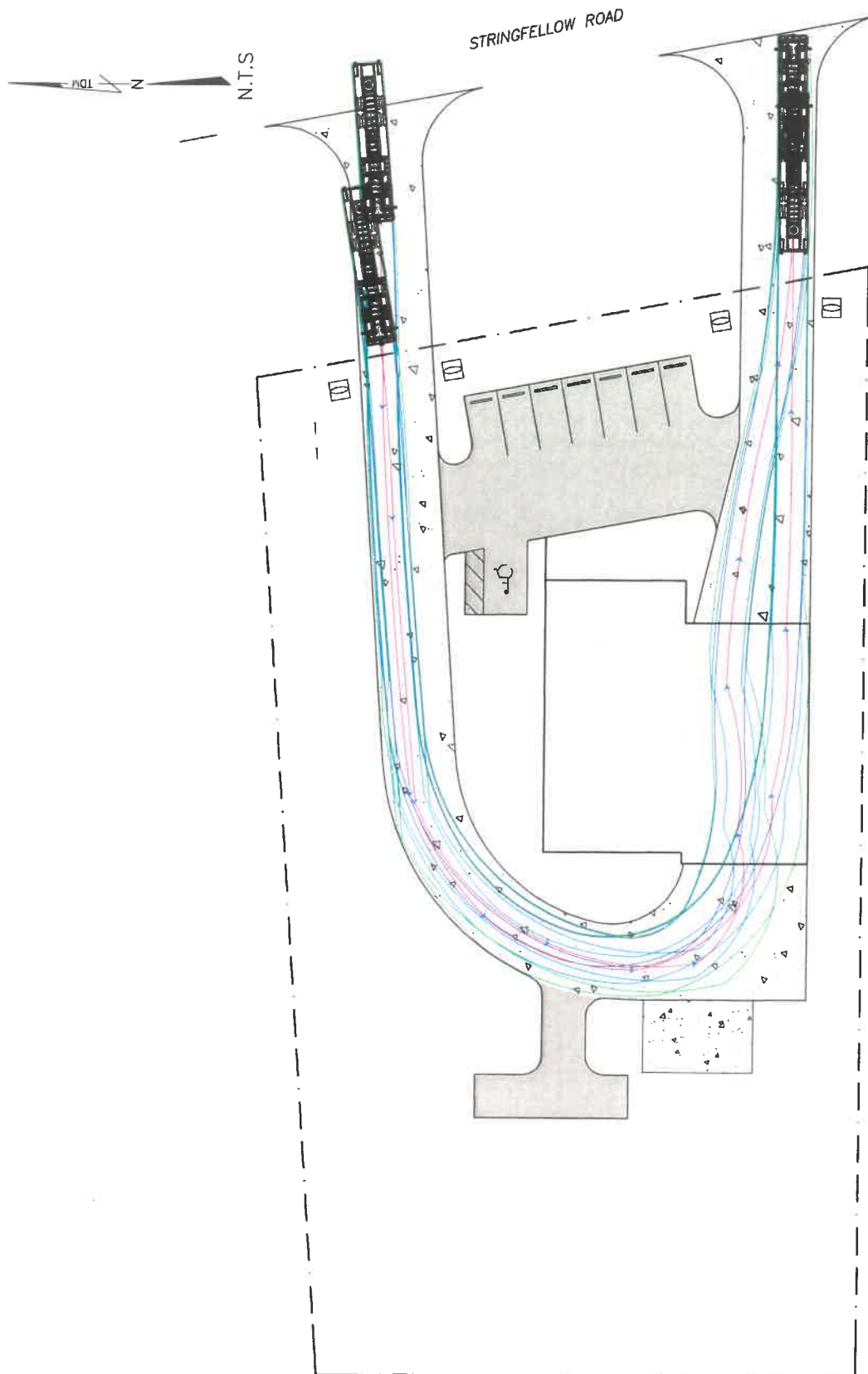


EXHIBIT 1
AUTO-TURN EXHIBIT (45 FT FIRE TRUCK)

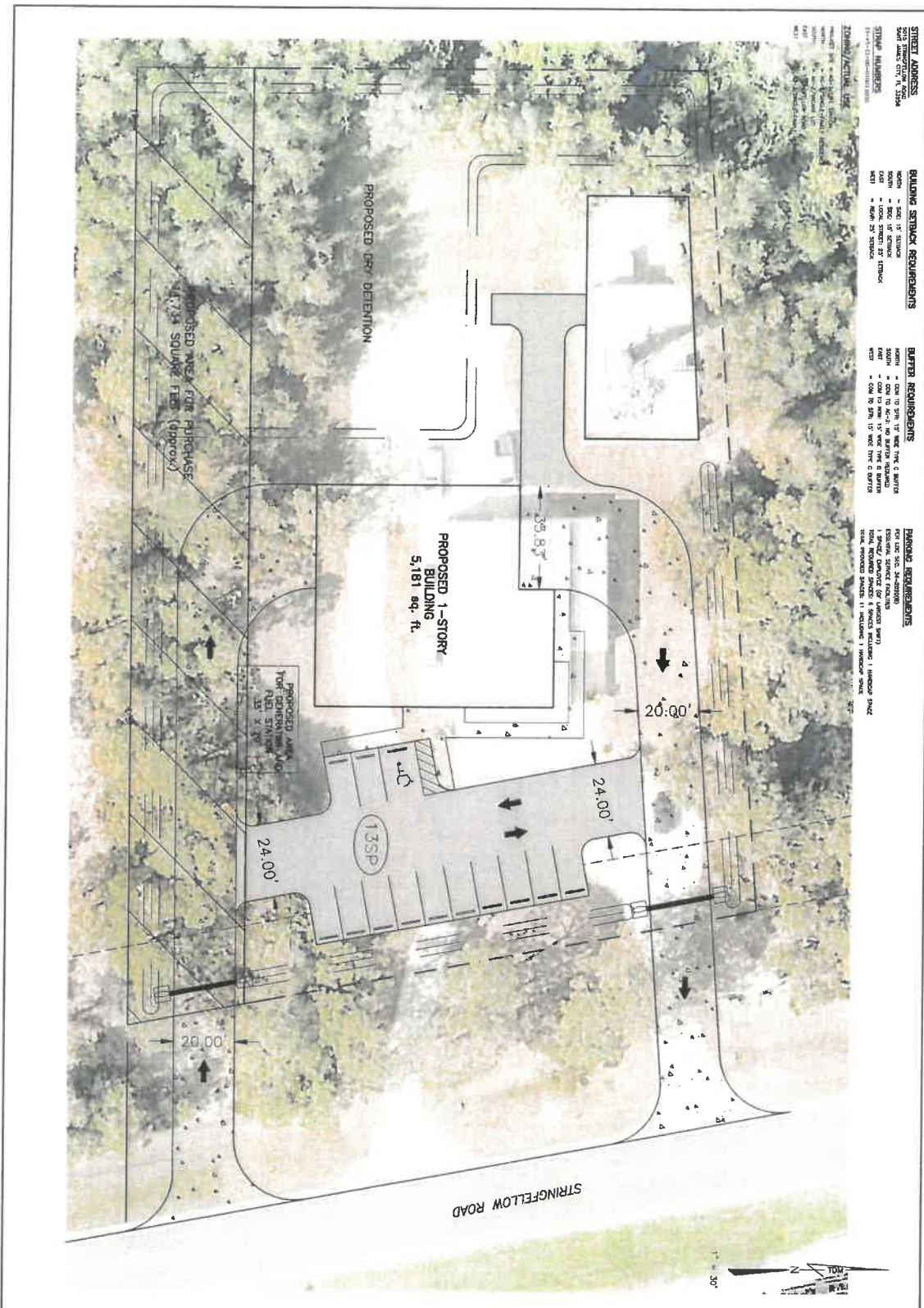
5015 STRINGFELLOW ROAD
SAINT JAMES CITY, FL, 33956

SOURCE: TDM, 05/2021

DEAN MATHY
FLORIDA P.E. #25022
SEAL MUST BE EXEMPTED BY



43 Barkley Circle, Suite #200
Fort Myers, FL 33907
Phone: (239) 433-4231
Fax: (239) 433-9632
Email: dean@tdmconsulting.com
Certificate of Authorization # 29086



STREET ADDRESS
 1000 S. W. 10th Ave
 Fort Myers, FL 33904

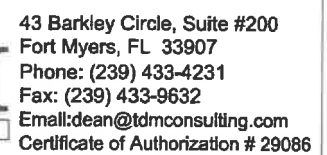
STAMP NUMBERS
 1000 S. W. 10th Ave
 1000 S. W. 10th Ave
 1000 S. W. 10th Ave

BUILDING SETBACK REQUIREMENTS
 FRONT - 10' SETBACK
 SIDE - 10' SETBACK
 REAR - 10' SETBACK

BUFFER REQUIREMENTS
 FRONT - 10' SETBACK
 SIDE - 10' SETBACK
 REAR - 10' SETBACK

PARKING REQUIREMENTS
 1000 S. W. 10th Ave
 1000 S. W. 10th Ave
 1000 S. W. 10th Ave

SHEET # 5 of 15		DEAN MARTIN, P.E. LICENSE NO. 52022 STATE OF FLORIDA PROFESSIONAL ENGINEER	CIVIL ENGINEERING TDM CONSULTING 403 Bentley Circle, Suite 200 Fort Myers, FL 33907 Phone: (239) 433-4231 Fax: (239) 433-4232 www.tdmcivilengineering.com	PINE ISLAND FIRE STATION SITE DIMENSION PLAN #2	DATE REVISIONS DESIGNED BY DRAWN BY CHECKED BY APPROVED BY
---------------------------	--	---	---	--	---



Proposal
for



Partner Agreement and Implementation

→ the commitment.



CRS Technology Consultants' specialty is designing, implementing and maintaining technology systems to keep our clients ahead of the curve in ***their*** industries. We achieve this through consultative partnerships and by truly knowing our clients' businesses.

Technology changes, services evolve, but what remains constant is CRSTC's unwavering commitment to support our clients in the way we provide services and in the way we run our own business.

- **13 Network Consultants (for onsite and remote support)**
- **robust state-of-the-art network monitoring 24/7/365**
- **24/7 service available**
- **professional certifications held by all Network Consultants**
- **drug tests and criminal background checks on all employees**
- **confidentiality agreements and code of ethics signed annually by all employees**
- **professional liability insurance and workers' compensation for all employees**
- **executive level benefit plans for all employees (employer paid: medical, dental, vision, life and AD&D insurance)**

Sound business practices, community commitment, and emphasis on integrity and team work are proof of our strong-hold in South Florida, and what sets us apart from the rest.

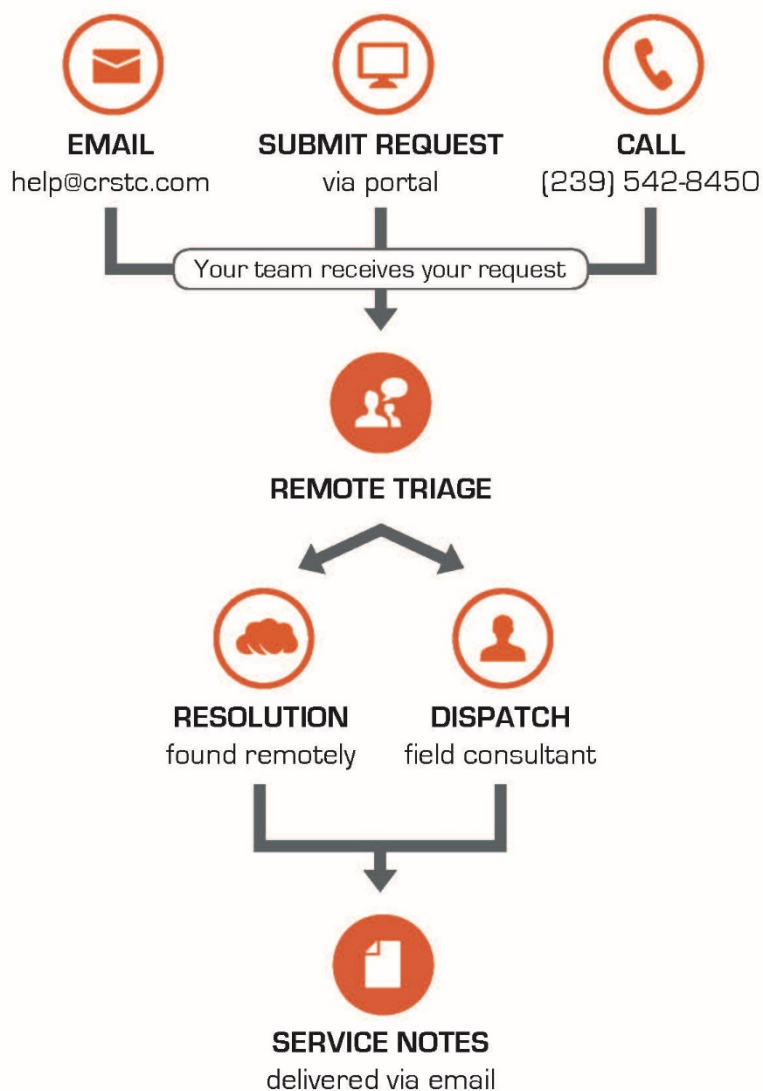


Service Requests from A to Z

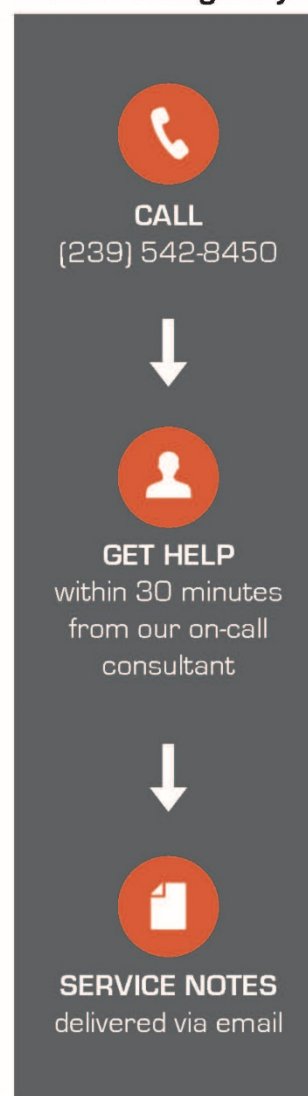


Need Help?

Contact your Dedicated Service Team
Monday - Friday between 8:00 a.m. and 5:00 p.m.



After Hours and Emergency



Synopsis

As part of a recently completed site survey coupled with information provided by you regarding your network footprint, CRS Technology Consultants recommends implementing our network monitoring and management solution on your devices and overall infrastructure. The monitoring agent will provide for 24/7 monitoring and alerting on device health, proactive failure detection, patch management, and secure remote access to your systems by authorized agents. Along with the Endpoint Detection and Response (EDR) agent, full real-time security monitoring, analysis, and device protection will be enforced. A dedicated Network Monitoring Probe PC will be installed at each Station to ensure that network logs, Patch Management routines, and other network security measures are enforced District-wide.

Data currently stored on your legacy physical server will be migrated to a combination of SharePoint Online (for District shared files) and OneDrive (for individual "My Documents" type files). Your email services will be migrated from Microsoft Exchange on-premise to Office 365's hosted Exchange email solution. This will give the District the full array of tools it currently enjoys as well as several advancements in Security, Compliance, and Disaster Recovery ability.

A Cisco Meraki MX-67 firewall will be implemented at each Station to replace the appliances currently in place, bringing with it a three-year subscription to Meraki's Enterprise Security licensing. As a fully cloud-managed appliance, changes may be made safely to this appliance by CRS to monitor and manage your network without ever having to be onsite. Thanks to the infrastructure, encrypted site-to-site VPN connections will be established between each station allowing for inter-station communication while also maintaining security at the edge of each network from outside threats.

To improve wireless network coverage and overall performance, a pair of Unifi AP AC Pro wireless access points will be installed in each Station (with an additional unit at your main station and one more set aside as a spare) with the SSID and password information set at your discretion and managed through Unifi's controller software installed locally on the N-Able Probe appliance and managed remotely thanks to our remote access software.

Ubiquiti Unifi Power-over-Ethernet managed switches will also be implemented at each Station, to allow gigabit-wired networking to all endpoints as well as provide for maximum monitoring against network degradation, malicious activity, and proactive assessment of system instability. These switches, being PoE, will also serve to provide power to your wireless access points, future VoIP phones, and security cameras as-needed.

The legacy servers on your network will be fully decommissioned from daily service once the live data has been safely moved to the cloud, with any remaining PCs still connected to its Active Directory Domain moved to Azure AD and lingering DNS and/or DHCP services audited for safe removal.

Your Office 365 data (Email, OneDrive, and SharePoint) will be backed up to SaaS Protection cloud, with fully recoverable objects at the individual file up to site-wide level. This data may be retained for up to a rolling five-years, at your data retention requirement/discretion. Also, Exchange Online in Office 365 will have the Mail Assure spam, malware, and Email continuity service positioned in front of it for an additional layer of end user security and overall Business Continuity.

Budget for All:

- \$4,600 one-time cost for the above-detailed scope Partner Implementation (divided into three installments:
 1. \$2,000, on acceptance;
 2. \$1,300, 30 days later; and
 3. \$1,300, at Project Execution completion);
- \$8,974 one-time cost for hardware and licensing (see Addendums);
- \$1,800 partner agreement fixed-cost monthly recurring (beginning the 1st day of month 2)



Partner Agreement

A modernized partner agreement is outlined below for your review and consideration. You will see it is structured in an “all-you-can-eat” model that provides you with a predictable budget for your consulting and services:

- Network monitoring – automated and continuous 24/7/365 (up to 35 devices)
- Custom and secure partner portal
- Daily backup checks (M-F)
- Consulting meetings and account documentation
- Reporting and analytics
- Support of your account for all standard services (M-F, 8am-5pm). This includes:
 - Unlimited standard remote support – always first line of action
 - Unlimited standard onsite support – if cannot be resolved remotely
- Automated security updates and patches on Microsoft Windows devices
- Managed real-time endpoint security solution for up to 20 agents
- Advanced backup, disaster recovery and business continuity solution for up to 1 PC
- ***Advanced backup, disaster recovery and business continuity solution for up to 4 physical servers
- SaaS Protection for Office 365 for up to 35 user accounts
- Email Continuity with spam and malware protection for up to 35 Office 365 users
- Automated patching of supported, third-party applications (i.e.: Adobe Acrobat and Java)
- One, monthly invoice for the above items.

Fixed Cost
\$1,800 per month (beginning the 1 st day of Month 2)

****Please note that your partner agreement monthly fixed cost will reduce from \$1,800 per month down to \$1,600 per month once your four physical servers are fully decommissioned****

Outside the scope of the fixed-cost structure:

- Project work will be bid separately;
- Emergency and/or After Hour service outside of Monday through Friday, 8:00 a.m. – 5:00 p.m. – will be billed at \$195 per hour.



Partner Agreement (continued):

Terms and Conditions:

- A. Notice:** Any notice required to be given pursuant to this agreement shall be delivered in writing by either hand delivery or first-class mail to the person and address designated below:
- (1) Matlacha Pine Island Fire Control District
5700 Pine Island Road
Bokeelia, FL 33922
(_____ - Designee)
- (2) As to CRS Technology Consultants
4426 SE 16th Place, Suite 4
Cape Coral, Florida 33904
(Julie Klein – Designee)
- B. Indemnification:** To the extent authorized by law, each party shall indemnify and hold the other party harmless from any loss, damages or injury to persons or property arising out of the negligent or intentional behavior of a party, its employees, subcontractors, invitees or assigns in the performance of the duties identified in this agreement.
- C. Limitation of Liability:** In no event shall CRS Technology Consultants be liable under any legal theory for any indirect, special or consequential damages, including, but not limited to, loss of profits, loss of revenues, or loss of data, even if CRS Technology Consultants has notice of the possibility of such damages.
- D. Limitation of Warranties:** Except for any express warranties and representations stated herein, CRS Technology Consultants makes no warranties, express or implied, and CRS Technology Consultants specifically disclaims any implied warranties of merchantability or fitness for a particular purpose.
- E. Exclusive Remedy:** CRS Technology Consultants' sole obligation and Matlacha Pine Island Fire Control District's exclusive remedy for any warranty failure is the correction or replacement of the nonconforming software products or services or the refund of an amount not to exceed the actual payments received by CRS Technology Consultants for such software products.
- F. Venue:** Venue for any legal proceeding to enforce the provisions of this agreement shall be court of competent jurisdiction in Lee County, Florida.
- G. Attorney's Fees:** In the event of institution of any legal proceeding to enforce the provisions of this agreement, the prevailing party shall be entitled to reasonable attorney's fees and costs. The term "prevailing party" shall be defined as the party receiving a final unappealed order of a court of competent jurisdiction granting the relief requested.
- H. Agreement Investment:** Our intent is to earn your business daily. Therefore, you may cancel or modify the Service Agreement at any time with 30 days' written notification. CRS Technology Consultants requires an email, letter and/or meeting outlining the reason(s) for the cancellation or modification. The Service Agreement will be terminated and/or modified 30 days from receipt of the notification. There will be no associated fees or penalties if the client is in good financial standing (paid in full on all open invoices) and notification with explanation is received.
- I. Associate Access:** At no time throughout the duration of this agreement will it be acceptable for a Partner to seek out and attempt to "hire-away" an associate of CRS Technology Consultants. If an associate solicits a job from the Partner, it is expected that the Partner will notify CRS Technology Consultants immediately.



Partner Agreement (continued):

Signature Page:

The signatures set forth below acknowledge acceptance of this Service Agreement in full as outlined herein.

MATLACHA PINE ISLAND
FIRE CONTROL DISTRICT

CRSTC, LLC,
d/b/a CRS TECHNOLOGY CONSULTANTS

By: _____

By: _____

Printed Name and Title

John Joyce, Owner, Authorized Member

Date Signed: _____

Date Signed: _____



Next Steps

Frequently, we are asked what the next steps are to proceed when ready to move forward. We are including these steps below.

- Sign and return the signature page to help@crstc.com.
- Place your order direct through Amazon.com for the product specified (Please see Pages 10-11).
- Place your order direct through UniFi for the product specified (Please see Pages 12-14).
- That's it! We will contact you within seven days to coordinate the schedule of your implementation.



Addendums .



Network Monitoring Probes (from Amazon.com)

[Click Here for Link](#)

Quantity: 4 = ~\$1,180



Roll over image to zoom in

CHUWI CoreBox Windows 10 Mini PC, Intel Core i5 Mini Desktop pc, 8GB DDR3 256GB SSD, Expandable 2TB 2.5 Inch HDD, 2.4GHz/5GHz Dual WiFi/Gigabit Ethernet / 4K Decoding/BT4.2

Visit the CHUWI Store

★★★★☆ 268 ratings | 144 answered questions

Amazon's Choice for "chuwi"

List Price: ~~\$399.99~~

Business Price ~~\$295.00~~ & FREE Returns

You Save: \$104.99 (26%)

Buy more, save more

5 units

\$289.99

Save 27%

10 units

\$279.99

Save 30%

LOWEST PRICE

Get a \$100 Amazon.com Gift Card upon approval for the Amazon Business American Express Card. Terms apply.

Brand	CHUWI
CPU Model	Core i5-5257U
Computer Memory Size	8 GB
Ram Memory Installed Size	8 GB
Series	Intel
Graphics Coprocessor	Intel HD Graphic6100



Firewalls (from Amazon.com)

[Click Here for Link](#)

Quantity: 4 = ~\$3,200



Includes **3 Year**
Enterprise License

Cisco Meraki MX67 Small Branch Security Appliance with 3 Year Enterprise License

Brand: Unknown

★★★★☆ 5 ratings

Best Seller

Price: \$799.99 ✓prime & FREE Returns

Free Amazon tech support included ▾

New (2) from \$799.99 ✓prime

[Report incorrect product information.](#)

Cisco WS-C3560CX-12PD-S Catalyst 3560-CX
12 Port PoE 10G Uplinks IP Switch
\$1,393.79

Sponsored ⓘ



Wireless Access Points (from UniFi - store.ui.com)

[Click Here for Link](#)

Quantity: 10 (2, 5-packs) = ~\$1,398

UniFi PRO Access Point

SKU: UAP-AC-PRO-5-US


[Specifications](#) [Datasheet](#) [Quick Start Guide](#)

Build your Wi-Fi network with the UniFi® ac Pro Access Point, part of the Ubiquiti Networks® UniFi Enterprise WiFi System. The UniFi AC Pro Access Point, is an indoor/outdoor, high-performance, 802.11ac dual-band access point, capable of speeds up to 1750 Mbps with a range of up to 122 meters.

Features:


- Simultaneous Dual-Band 3x3 MIMO
- 5 GHz Band with Speeds of up to 1300 Mbps
- 2.4 GHz Band with Speeds of up to 450 Mbps
- Range up to 122 meters (400 feet)
- 802.3af PoE / 802.3at PoE+ Compatible
- (2) Gigabit Ethernet Ports

* Note: 5-pack doesn't include POE injectors



UAP-AC-PRO-US
\$149

+
0
-



5-Pack
\$699



\$699

Sold Out

Login

to subscribe to back in stock e-mails



Usually ships in 2-4 weeks



Works with UniFi Network Application

- Manage your networks from a single interface.
- Enjoy intuitive configuration options, as well as robust device control and monitoring.
- Upgrade device firmware remotely.
- Easily manage network users and guests.
- Personalize the design, architecture, and privacy of guest hotspots.



48-Port PoE Managed Switch (from UniFi - store.ui.com)

[Click Here for Link](#)

Quantity: 1 = ~\$1,099

UniFi Switch PRO 48 PoE

SKU: USW-Pro-48-PoE

[Specifications](#) [Datasheet](#) [Quick Start Guide](#)

48-port switch with (40) 802.3at PoE+ ports, (8) 802.3bt PoE++ ports, and (4) 10 GB SFP+ ports. Powerful second-generation UniFi switching.

UniFi Switch Pro 48 PoE is a fully managed Layer 3 switch with (8) 802.3bt (PoE++) and (40) 802.3at (PoE+) Gigabit Ethernet ports. (4) 10G SFP+ uplinks offer link aggregation for higher capacity and increased availability. The UniFi Switch Pro 48 PoE features a rich set of Layer 2 capabilities and integrates Layer 3 functionality such as inter-VLAN routing, static routing, and DHCP server. The UniFi Switch Pro 48 PoE is the ideal access layer switch for any UniFi solution - it combines up to 600W of near-silent PoE power with UniFi SmartPower RPS power redundancy. UniFi Network application and UniFi Network mobile app allow admins to configure and monitor virtually all of the switch features in an intuitive graphical user interface from anywhere.

Features:

- (8) Gigabit RJ45 802.3bt PoE++ ports
- (40) Gigabit RJ45 802.3at PoE+ ports
- (4) 10G SFP+ ports
- Layer 2 and Layer 3 features
- 600W maximum PoE power
- UniFi SmartPower RPS DC input
- Near-silent cooling
- 1.3" touchscreen display
- Managed with UniFi Network application

Managed with UniFi Network Application Version: 5.10.5 or higher



Works with UniFi Network Application

- Manage your networks from a single interface.
- Enjoy intuitive configuration options, as well as robust device control and monitoring.
- Upgrade device firmware remotely.
- Easily manage network users and guests.
- Personalize the design, architecture, and privacy of guest hotspots.

[And much more →](#)

\$1,099

Sold Out

Log in

to subscribe to back in stock e-mails



24-Port PoE Managed Switch (from UniFi - store.ui.com)

[Click Here for Link](#)

Quantity: 3 = ~\$2,097

UniFi Switch PRO 24 PoE In-Stock

SKU: USW-Pro-24-PoE

[Specifications](#) [Datasheet](#) [Quick Start Guide](#)

24-port switch with (16) 802.3at PoE+ ports, (8) 802.3bt PoE++ ports, and (2) 10 GB SFP+ ports. Powerful second-generation UniFi switching.

UniFi Switch Pro 24 PoE is a fully managed Layer 3 switch with (8) 802.3bt (PoE++) and (16) 802.3at (PoE+) Gigabit Ethernet ports. (2) 10G SFP+ uplinks offer link aggregation for higher capacity and increased availability. The UniFi Switch Pro 24 PoE features a rich set of Layer 2 capabilities and integrates Layer 3 functionality such as inter-VLAN routing, static routing, and DHCP server. The UniFi Switch Pro 24 PoE is the ideal access layer switch for any UniFi solution it combines up to 400W of near-silent PoE power with UniFi SmartPower RPS power redundancy. UniFi Network application and UniFi Network mobile app allow admins to configure and monitor virtually all of the switch features in an intuitive graphical user interface from anywhere.

Features:

- (8) Gigabit RJ45 802.3bt PoE++ ports
- (16) Gigabit RJ45 802.3at PoE+ ports
- (2) 10G SFP+ ports
- Layer 2 and Layer 3 features
- 400W maximum PoE power
- UniFi SmartPower RPS DC input
- Near-silent cooling
- 1.3" touchscreen display
- Managed with UniFi Network application

Managed with UniFi Network Application Version: 5.10.5 or higher



Works with UniFi Network Application

- Manage your networks from a single interface.
- Enjoy intuitive configuration options, as well as robust device control and monitoring.
- Upgrade device firmware remotely.
- Easily manage network users and guests.
- Personalize the design, architecture, and privacy of guest hotspots.

[And much more →](#)

\$699

— 0 +

Add to Cart





Confidentiality Agreement for Service Provider/Consultant

Confidential information includes company information, employee information, client information, financial information, computer systems information and information proprietary Matlacha Pine Island Fire Control District, and its partners. CRS Technology Consultants ("CRSTC") may learn of or have access to some or all of this confidential information through the computer system, client records, or through contract activities.

Confidential information is valuable and sensitive and is protected by law and strict Matlacha Pine Island Fire Control District policies. The intent of these laws and policies is to assure that confidential information will remain confidential; that is, it will be used only as necessary to accomplish the organization's mission. CRS Technology Consultants' principle obligations in this area are explained below. Violations of these obligations will subject CRS Technology Consultants to immediate termination of the Service Agreement. There is zero tolerance for infractions.

As a Matlacha Pine Island Fire Control District service provider/consultant:

- CRSTC will use confidential information only as needed to perform our legitimate responsibilities.
- CRSTC will only access information for which we have a need to know.
- CRSTC will not in any way divulge, copy, release, sell, loan, review, alter, or destroy any confidential information except as properly authorized within the scope of our professional activities affiliated with Matlacha Pine Island Fire Control District.
- CRSTC will not misuse confidential information or carelessly care for confidential materials.
- CRSTC will not discuss client, District, or employee confidential information outside the context of our daily responsibilities and will not discuss such information in front of, or in hearing distance of those who do not have the need to know.
- CRSTC understands that its obligations under this agreement will continue indefinitely.

By signing this agreement, CRSTC attests that the above information has been read and agreed to.

CRSTC, LLC, d/b/a CRS TECHNOLOGY CONSULTANTS

By: _____

John Joyce, Owner, Authorized Member

Date Signed

